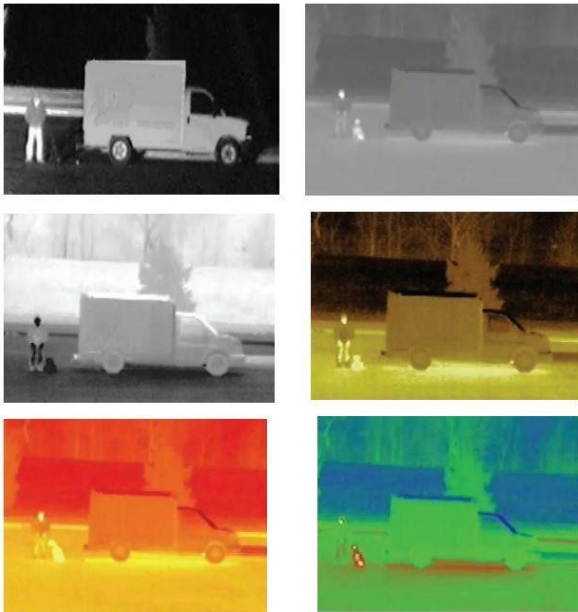




## Dynacom WQT4980PT Dual Sensors Ultra Telefocal IP PTZ 60x Optical Zoom and 150mm Thermal Camera

WQT4980PT is heavy duty Pan Tilt Zoom Camera for long range surveillance.

### Examples of optical and thermal modes



Optical image / Thermal image, White Hot mode;  
(middle) Black Hot / Sepia; (bottom) Globow / Rainbow

### Key Features:

- \* Industrial Heavy Duty Pan Tilt Unit
- \* 60x Optical Zoom at 1080 60fps
- \* 750mm telefocal optical zoom surveillance 8KM
- \* 150mm Thermal surveillance human 4KM / car 6KM
- \* H.264 / H.265 Full HD

### Pro Applications

- \* City Surveillance
- \* Airport Surveillance
- \* Border Surveillance
- \* Military Base Surveillance
- \* Industrial Surveillance

<b>Camera</b>	
Image Sensor	1/1.8" Exmor CMOS
Effective Pixels	1944(H) x 1092(V), 2 Megapixels
Scanning System	Progressive
Electronic Shutter Speed	1/1 ~ 1/30,000s
Min. Illumination	Color:0.05Lux F1.6, B/W: 0.005Lux F1.6, 0Lux(IR on)
S/N Ratio	More than 55dB
Video Output	BNC(1.0Vp-p/75Ω), PAL/NTSC
<b>Camera Features</b>	
Day/Night	Auto(ICR)/Color/B/W/Thermal
Backlight Compensation	BLC / HLC / DWDR
White Balace	Auto, ATW, Indoor, Outdoor, Manual
Gain Control	Auto/Manual
Gain Control	Auto/Manual
Noise Reduction	Ultra DNR(2D/3D)
Privacy Masking	Up to 24 areas
Digital Zoom	16x
EIS	Support
Defog	ON/OFF Build in
<b>Lens</b>	
Focal Length	12.5mm – 750mm (60x Optical Zoom)
Max Aperture	F3.6 ~C
Focus Control	Auto/Manual
Angle of View	H:31.5° ~ 1.1°
Close Focus Distance	100mm ~ 1000mm
<b>Thermal Light</b>	
Lens	150mm
Pixels	384*288
Sensor	≤50 mK, 7.5-14um
<b>PTZ</b>	
Pan/Tit Range	Pan:0° ~ 360°endless; Tilt: -20° ~ 90° , auto Flip 180°
Manual Control Speed	Pan: 0.1° ~ 240° /s; Tilt:0.1° ~ 120°/s
Preset Speed	Pan: 240° /s; Tilt: 200° /s;
Preset	255(Pelco-P/D)