

# New generation car video recording system DC102

Dynacom DC102

Mobile Recorder  
Tracking and recording



Full HD 1080P  
VEHICLE TRACKING AND DATA RECORDER  
WIDE ANGLE 120° FOV  
2M CMOS SENSOR

rear front

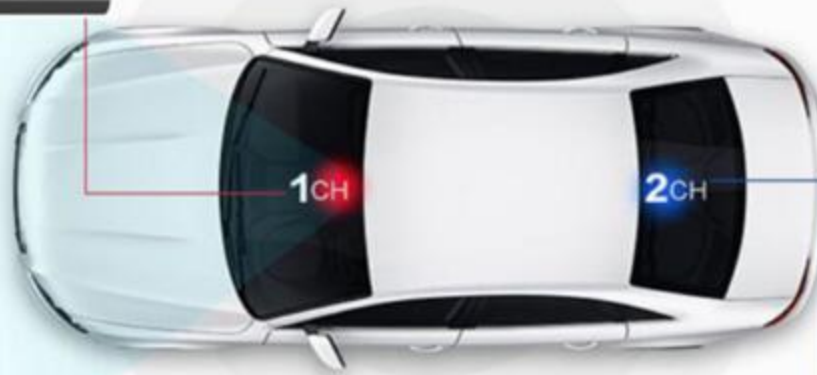
- Live stream
- Tracking
- WIFI
- Dual Cam
- Alarm
- Cloud storage
- Web APP
- communication
- Android

# High resolution video



## Front Camera(FHD)

1. Forward camera 1080P
2. Loop recording



## Reversing Camera

1. VGA resolution
2. Reversing angle 120 degree



# Features



Operating system: Android 4.1

Memory capacity: 8GB

Extension Card: Maximum support 32GB extensions.

Network support: GSM, WCDMA(Unicom 3G)

Orientation system: GPS, A-GPS

Wifi: Support

Data cable: BMW line interface

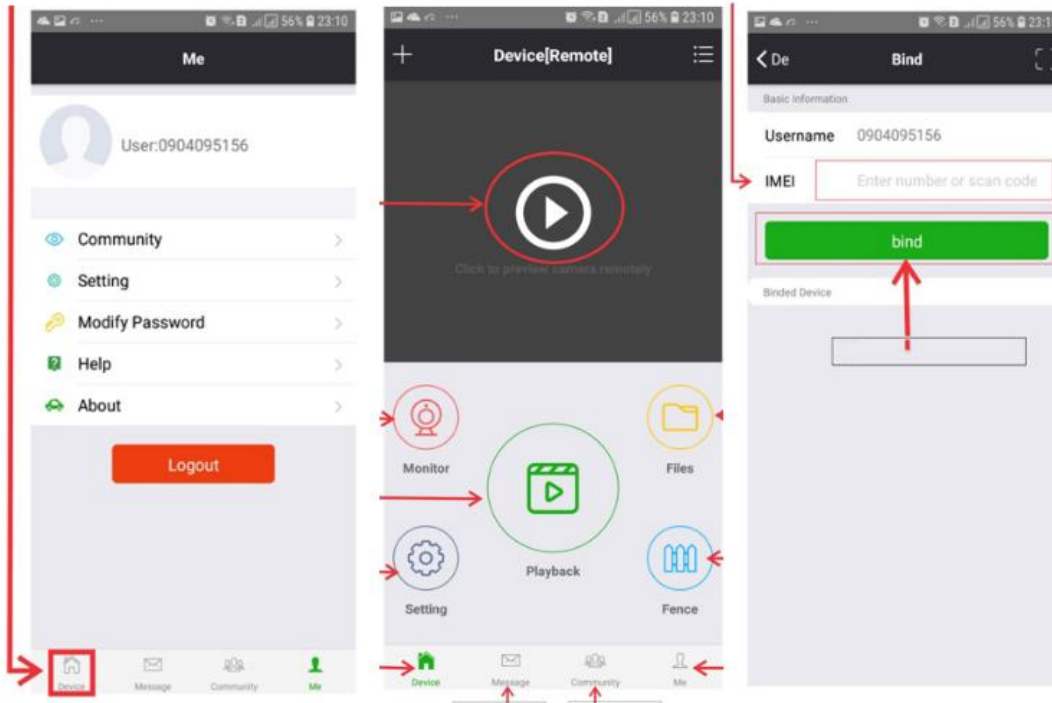
Working voltage: 4V

Maximum voltage: 4.6V

Working temperature: -20 ° / 70 °

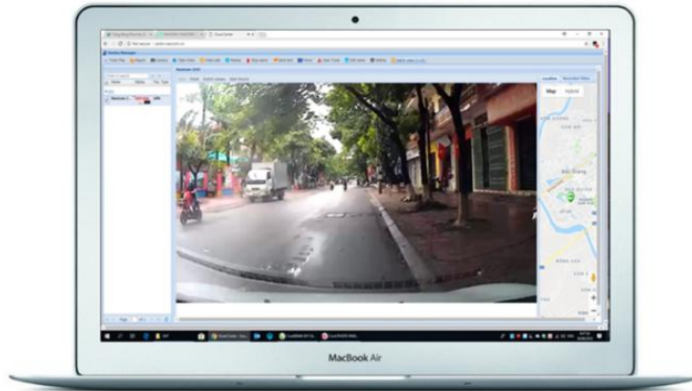
# Cloud Service

## Image for APP

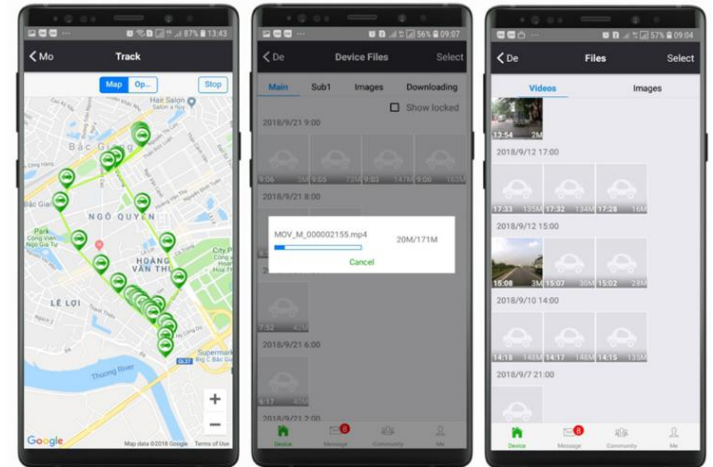


It is used in the intelligent cloud rearview mirror under the car platform, driving recorder, remote control of cloud electronic dog, can get pictures and videos, real-time calls, etc. It also includes a car owner community; users can share videos through the recorder

# Remote Management



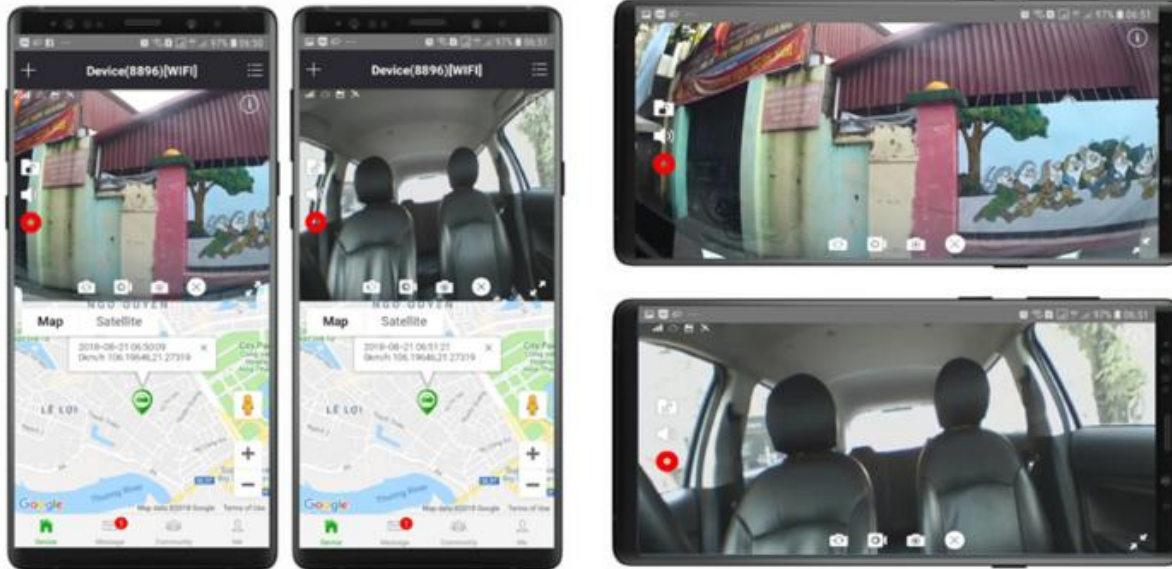
CLOUD SERVER SAFETY DATA DISPLAY / VIDEO LOAD FROM SMART PHONE & PC

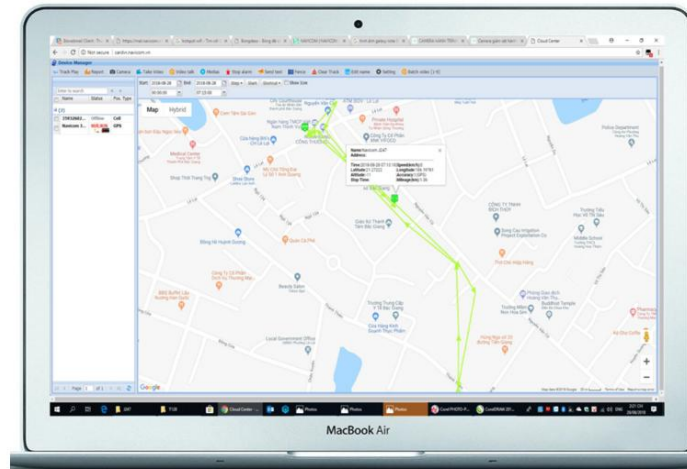


# Record and Tracking

Watch live video and track car location remotely on Smartphone & PC

Watch live video and track car location remotely on Smartphone & PC





Light night vision: F1.4 large aperture, stay clear without light or low light.

Front and rear record: 1080P high definition picture quality, the front and rear photography can synchronize the recording

The special safe flow format is used to record the last moment even though the power is often cut off, the slot is loosened, and the machine card is detached.

Speed warning: EM Authentic speed warning data, real-time online update.

Two-way connection: Dual channel, remote or WIFI connection to mobile phone client (car safety).

Remote monitoring: Taking active/passive obtain an anti-theft map/ real-time map(front and rear), and it can push voice commands remotely.

Mobile phone searching vehicle: You can directly use mobile phone to obtain images around the vehicle as to judge the location of the vehicle.

Real-time live broadcast: 24 hours live broadcast, can detach real-time driving videos/pictures.

Driving path: In the mobile phone client function interface, you can check the GPS track and set up the intercept.

Real-time traffic conditions: Real-time broadcast traffic information(Need to be in areas where the traffic information is supported).